

# THE CMLC NEWS

The Canterbury Mineral & Lapidary Club Inc.  
Newsletter for November 2020



**President** -- Malcolm Luxton Phone 033088874  
**Treasurer** -- Lynda Alexander Phone 3476393  
**Secretary** -- Tessa Mitchell-Anyon Phone 027 963 1235  
**Bulletin Editor**--Craig McGregor Phone 0274209814  
**Club Mailing Address:** 24 O'Briens Rd, Sockburn, Christchurch 8042.

**Email:** [cmlclub@chch.planet.co.nz](mailto:cmlclub@chch.planet.co.nz)

**Website:** [www.cmlclub.org.nz](http://www.cmlclub.org.nz)

**Facebook:** Canterbury Mineral and Lapidary Club

**Meeting Venue & Clubrooms:** 110 Waltham Road, Waltham, Christchurch 7:30 pm on the second Thursday of the month [Feb. to Nov.]

General Meeting: November 12, February 11, March 11  
Committee Meeting: November 19, January 14, February 18  
Micro Mineral Meeting: Every second week, Tuesday evenings.

**This is your last bulletin for the year. So, I wish you all a very Merry Christmas, and a very Happy New Year. Your next bulletin will be at the beginning of February.**

**The November Meeting:** Our guest speaker will be Frida Looser, who will speak about the History of Salt.

**Supper Duty for the November Meeting:** PLEASE: If you are on supper duty, make sure the tea, coffee and cups are laid out, and **at the end of the meeting, make sure the dishes are done, and the kitchen is tidy.** These are not arduous tasks, and only takes a few minutes.  
Robin Hall, Jim Barwell, Susan Baldwin, Jamie Beagle, Gerald Birdling, Paul Breakwell, Miranda Bryant.

**Auction at the November Meeting:** This will be some more material from the Brian Jones collection.

There will also be a rock tumbler up for auction.

**Notice from Lynda Alexander:** The auction for Brian Jones's material that was supposed to take place on Saturday the 7th of November has

been delayed until some time next year. The new date is to be advised nearer to the time.

**Field Trip:** The field trip for November will be to the Oamaru Gem Show on 14, 15 November. A field trip going to Five Forks, led by Julian Twiss will leave the Squash Courts in the old town on Sunday 15th at 10 a.m. The Show, held over 2 days will be in the Squash Courts, next door to the usual venue of the Scottish Hall.

**The October Monthly Competition Results:**

.....	1st	2nd	3rd
Lapidary: Polished Calcite....	C. McGregor	J Taylor	O. Swan
Fossil Fossil from Motunau ...	No Entries		
Mineral: Hematite .....	L. Hall	J. Taylor	
Alphabet Cup: JKL.....	C. McGregor	O. Swan	C.Tait
Recent Find: .....	J Taylor	L. Hall	
Bring and Brag .....	E. Hitt	C. McGregor	S. Baldwin

**November Monthly Competitions:**

- Lapidary: Tumble polished stone or sphere.
- Fossil Fossil Coral
- Mineral: Quartz
- Alphabet Cup: MNO (Specimen from a country or state starting with)
- Recent Find: From the last club Glen Afric trip
- Bring and Brag Be prepared to talk about this.

**New Members:** Please make these new members welcome. Joanne Walton, Tessa and Hugo Lloyd, Peter Vallance, Craig and Nic Elms.

**The December Club Christmas Barbecue Party: Saturday 12 December:** The Christmas grocery hamper raffle will be drawn at the barbecue. **Please bring along donations for this hamper at the November General Meetings and the barbecue.**

This is a great social get together and starts at 12.00 with a barbecue. Things to Bring: Meat for the barbecue, a shared main dish and shared dessert. Bring your own drinks, cutlery and plates. Also bring along your children, partners, grandchildren etc etc.

### **Report from Val Lear about the Show raffles:**

The Club was extremely fortunate once again to have another lovely range of rocks, minerals and related items donated by club members as well as The Crystal People for the annual show raffle. As well we were donated quite a bunch of small polished rocks and agates that were given out to the children who participated in the identification quiz organized by Anna Baker. Many thanks to all of those generous donors. Also to the volunteers who sold tickets over the 2 days, many thanks for giving up your shopping time. It was a great fundraiser and I am sorry that I haven't got the final total raised at this time.

This year the committee decided to purchase approximately a \$50 choice from each The Crystal People and Hetties rock shop as a small way to thank them for their ongoing support over the many years. These were added to the raffles. Making these choices was a challenge in itself. Feel free to go into their shops and see what I mean.

#### **Results:**

The committee has the identifying details for the record but for your information the happy winners were:

Paul – the Pounamu sphere.

Tara – The Amethyst crystal cluster and the Mohaka fossil slab.

Karina – The boxed assortment including the green argillite and Mt Barossa agate.

Mark – the boxed assortment including the Sth African Jasper and the brand new watch.

Lindsay – the Amethyst cluster and the rhyolite slab from Mt Hay.

The raffle was drawn by Deryn Tregurtha from The Crystal People. She is not a club member and did not have a ticket.

### **The National Association of New Zealand Rock and Mineral Clubs:**

for the last 3 to 4 years, this has been run from the Hutt Valley Wellington Mineral Club. As no other club offered to host this for the next 3 years, a remit was put forward to wind up the Association. This would have meant no more national shows under a national association, as well as disbanding the important role the Association has of disseminating information among all the rock and mineral clubs. Hence, I (your club bulletin editor—Craig) put my name forward as President of the Association for the next 3 years, and this has been accepted. Kindly accepting the positions of Vice President, Malcolm Luxton, Secretary, Scott Hardwick, and treasurer, Lynda Alexander, my thanks goes to them.



**Mt Somers / Morgan's  
Creek  
The largest agate found at  
Morgan's Creek,  
Mt Somers found about  
1988, bought by the Club  
and cut and polished by  
Vince Burke**

**A slice went to the Gemstone & Fossil  
Museum at Birdling's Flat**

**74kg Canterbury Agate**

The 74kg Agate boulder was discovered by Ken Sitarz in 1986. The agate was exposed on top of the ground next to an old slip above Morgan Stream at Mt Bonanza. As it was too heavy to lift, it was rolled down to Morgan Stream and covered up. In 1987 with help from Peter Russell, we stretchered the agate down Morgan Stream and reburied it near a large boulder. In 1988 with transport waiting at Woolshed Creek Hut. A team including Shane Russell, John Millward, Jason Woodrow and Sean McFarlane, used the stretcher to carry the agate over Morgan Stream and then tied the agate to a sack barrow and tied one of the stretcher handles to the top of the sack barrow. We took turns pushing and dragging the agate up and over the hill to Woolshed Creek Hut and then gently lifting the agate into the back of John's 4wd car.

This agate was purchased by the Canterbury Mineral & Lapidary Club in 2020 and was then cut and polished by Vince Burke.

**Searching for Tuhualite**

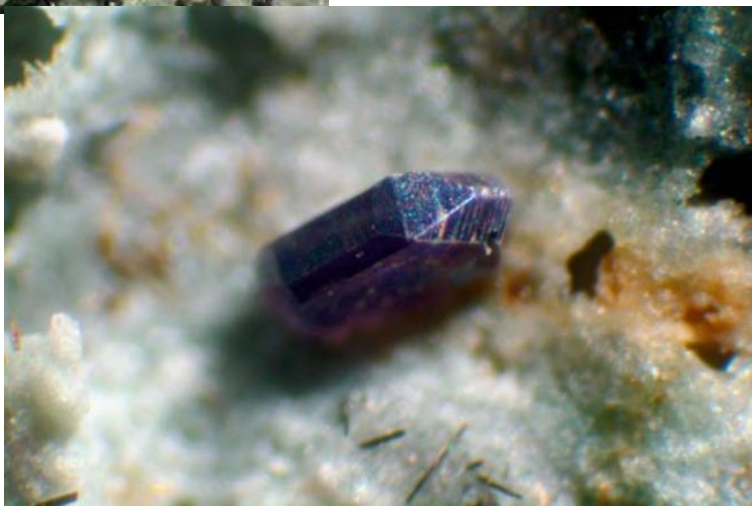
The British aviator and yachtsman Francis Chichester joined an expedition organised by Patrick Marshall to look for tuhualite on Mayor Island as cook. His culinary standard was not high, and he recalled:  
One day I grilled some steaks from a 150-lb swordfish; I must admit they were pretty tough. We had two professors in the party, and they had a dis-



pute; one of them got so angry that he picked up a loaf of bread to hurl it at the other. He was so furious that when he drew back his hand to hurl the loaf it flew out backwards; when his hand came forwards there was nothing in it. I thought that this was the funniest thing I had seen for years, and doubled up with laughing. Whereupon they both turned on me and said that it was entirely my fault; that my bad cooking had upset their livers.

Tuhualite –  $(\text{Na,K})\text{Fe}_2\text{Si}_6\text{O}_{15}$

Unique to New Zealand, tuhualite was identified by geologist Patrick Marshall in 1932. It is a rare constituent of the distinctive alkali rhyolites of Tūhua (Mayor Island) in the Bay of Plenty. It has also been recorded in volcanic ash on the Coromandel Peninsula, derived from Tūhua. Tuhualite occurs as isolated, tiny violet to deep purple crystals, up to 0.25 millimetres long.





Historic Picture: Opo Bay, Mayor Island

# HETTIE'S ROCK & CRYSTAL SHOP

**Birdwood Ave, Beckenham, Christchurch.**

**Also: Akaroa and Queenstown**





Sender CMLC, 24 O'Briens Rd, Sockburn, Christchurch 8042.

«Field1»  
«Field2»  
«Field3»  
«Field4»  
«Field5»

